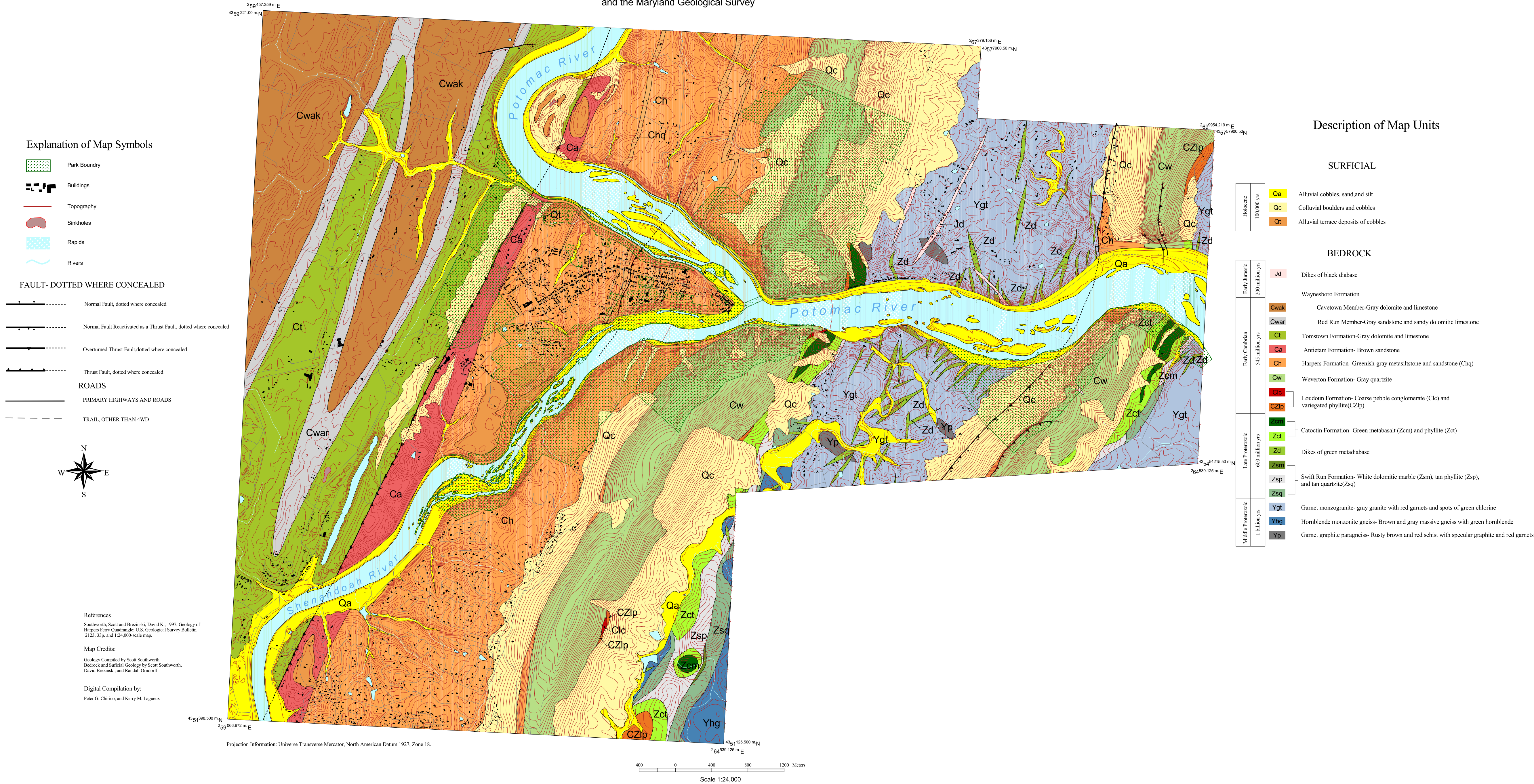


Prepared in Cooperation with the National Park Service
and the Maryland Geological Survey



**GEOLOGIC MAP OF HARPERS FERRY NATIONAL HISTORICAL PARK,
WEST VIRGINIA, MARYLAND, AND VIRGINIA**

by
Scott Southworth, David K. Brezinski*, Randall C. Omdorff,
Kerry M. Lagueux, and Peter G. Chirico

*Maryland Geological Survey

2000

Reference to any specific commercial product, process, or service by trade name trademark, manufacturer, or otherwise does not necessarily constitute or imply its endorsement, recommendation, or favoring by the United States Government or any agency thereof.

This report is preliminary and has not been reviewed for conformity with the U.S. Geological Survey editorial standards (or with the North American Stratigraphic Code).